



THE **Leys**
CAMBRIDGE



ACHIEVE THE
EXCEPTIONAL
at The Leys

Welcome to *The Leys*

At The Leys, we believe that school is not simply a preparation for life – it is life. That's why we aim to make every pupil's experience here rich with challenge, choice and opportunity. School should be a place of growth and discovery, where young people are encouraged to flourish emotionally, intellectually and socially. It's not a rehearsal for the future – it's a vital and vibrant part of the journey.

Founded in 1875 by the Methodist Conference, The Leys is the only co-educational boarding and day school in Cambridge. We are proud of our heritage, and we continue to uphold values such as kindness, courtesy, respect and integrity. But we are also a forward-thinking school, preparing young people for a world that is constantly evolving. Our location in the heart of one of the world's most dynamic academic and cultural cities gives us a unique advantage – Cambridge is not just where we are, it's part of who we are.

With around 570 pupils, The Leys offers an exceptional breadth of opportunity – from academic excellence to creative, sporting and leadership pursuits. At the same time, our scale allows us to know each pupil as an individual. This strong sense of community and personal attention is central to our ethos. It builds confidence – not just in the classroom, but in every aspect of school life. And that confidence, nurtured in a supportive and ambitious environment, is one of the most powerful gifts we can give our pupils.

I hope this prospectus gives you a sense of what makes The Leys so special. But the best way to understand our community is to experience it for yourself. We warmly welcome families to visit, to meet our staff and pupils, and to see the school in action. We believe that education is a partnership, and we look forward to working closely with you as we support your child on their journey.

I look forward to meeting you.



Clare Ives
Head





A rich and vibrant city

A home from home

The Leys is a small close-knit community based on mutual respect and shared values. Its backbone is the House system where pupils are allocated to one of eleven Houses (this includes three Day Houses). The Boarding House is a second home for our pupils, where support is available at all times from the resident Housemaster or Housemistress (Hsm as we call them), their Assistants (also resident) and the tutor team dedicated to each House. A friendly, caring Matron is always in the House up to mid-afternoon.

Parents are always very welcome to come to any of the school events taking place, whether it be on the sports field, in Chapel or in the Performing Arts Centre, Great Hall. Boarders can opt to go home after their Saturday commitments, or they can choose to stay in School where one of the highlights is the famous Leysian Sunday brunch!



8 BOARDING HOUSES
3 DAY HOUSES

At The Leys we offer Boarding for pupils from Year 7 with these younger children having their very own Boarding House (Moulton) across the road from the main campus. For the older pupils, there is a choice of three boys' Houses, two girls' Houses and one Sixth Form House each for boys and girls.



Discover more:



Life at The Leys



LOCATED IN THE HEART OF CAMBRIDGE

Cambridge is one of England's most historic and cultural cities and its university ranks amongst the best in the world. It is also a centre of innovation and development and has risen to be the UK's leading technology and biotechnology cluster.

This gives pupils at The Leys unparalleled opportunities to hear leading figures speak on matters from biotechnology to astronomy and cultural affairs.

The area around Cambridge is sometimes known as Silicon Fen which reflects that the region is a powerhouse of cutting edge high-tech companies and science parks. The pupils benefit from being in close proximity to such ground-breaking ideas and innovation.

Cambridge is only 50 minutes away from the capital and there are a number of excursions to London each year.



Discover more:



Academic *Excellence*

Based upon the foundation stone of a happy campus environment, a strong work ethic is built from the outset. As pupils progress through the structured framework of their early years, they take on increased responsibility for planning their workloads with the full support of a co-ordinated tutorial system. Classes are small, enabling teachers to offer individual help to every pupil.

The school's academic results reflect the expertise, vitality and enthusiasm that our teachers inject into school life.

If you ask Leysians, they will testify to the warmth, energy and commitment of their teachers.

 **100%**
A Level Pass Rate
100%
GCSE Pass Rate



“

The quality of the pupils' academic and other achievements is excellent.

~ ISI Report 2022



The Vision Studio



The Wider Curriculum

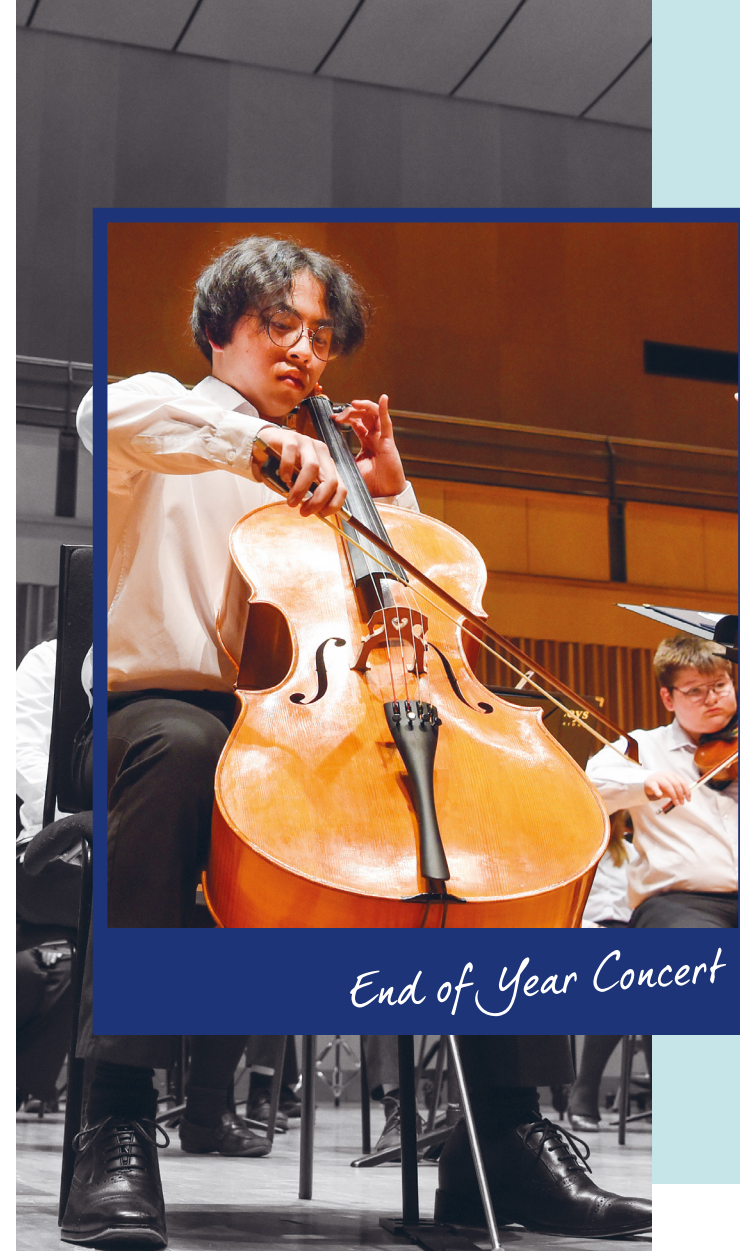
Drama

The termly drama programme makes full use of the school's outstanding theatre and drama facilities in Great Hall. This provides opportunities for pupils across all year groups to try out many skills, from performance and set design to production and technical support. The School puts on at least five productions each year and there are regular opportunities for individuals or small groups to perform short extracts in Assembly. There is also a very active Drama Scholars' programme that aims to foster a passion for performance and to develop pupils' performance and design skills.



Dance

Dance is another strength at The Leys and is very popular with pupils in all year groups. In our purpose-built dance studio we offer classes in Contemporary, Street, Modern Jazz, Classical Ballet, Hip Hop, Acrobatics and the popular Aerial Hoop. Other fitness classes are also available such as Yoga and Pilates. There is an annual Dance Show which is a big highlight of the year.



Music

The Music School is a vibrant department at the heart of school life and there is provision for musicians at every level, both academically and practically. More than 200 instrumental lessons are taught each week, and tuition is available in most instruments. There are numerous performing opportunities, from informal breaktime and lunchtime concerts to larger scale formal events including the Concerto Competition and the End of Year Concert at Saffron Hall. Choir visits are arranged to cathedrals and colleges, and recordings and tours are also undertaken. There are a wide variety of ensembles including the Chapel Choir, Chamber Choir, Junior Voices, Orchestra, Wind Band, Big Band, String Orchestra and various smaller groups. The Music School's facilities are excellent and well resourced, including a 120-seat recital hall with Steinway grand piano and harpsichord, recording studio, ICT composition suite, percussion room, music library and numerous practice rooms. The school also has a C. Bechstein concert grand piano and a 3-manual Viscount organ.



After School Activities

During the school week we offer an extensive range of clubs, societies and activities that our pupils can take advantage of. Most of these run in our After School Activities programme in the late afternoon. In addition, there are talks and lectures that occur, both on site and in Cambridge. Pupils, with guidance from house staff, have responsibility for choosing their wider curricular activities and signing up for them each term.



100+
WEEKLY
CLUBS AND
ACTIVITIES



“

Pupils are empowered to make informed and insightful decisions that affect both their learning and their future lives.

~ ISI Report 2022



Sport

Pupils have many opportunities to enjoy competitive and recreational sport. A team sports ethos, which develops leadership skills, social interaction and teamwork, is central to our approach and complements pupils' academic and non-academic activities.

Hockey, rugby and netball are the focus of the winter sports programme while cricket and tennis form the mainstay of the summer term. Rowing, swimming, strength and conditioning, badminton, squash and volleyball are also on offer, with sailing, basketball, football, climbing and dance featuring in the School's games and activities programme. Teams at all levels have the opportunity to compete in fixtures against other schools and in county, regional and national competitions. House matches encourage playing sport for fun and enjoyment.

Our outstanding facilities include two Astroturf hockey pitches, all-weather tennis courts, indoor swimming pool, climbing wall, rifle range and a dance studio, as well as a modern sports complex with conditioning suite, large hall, three squash courts and a two-lane cricket centre.

The Leys also shares a boathouse on the River Cam with Churchill, King's and Selwyn Colleges, and rowing proves to be a popular option for many pupils. The School's Head of Strength and Conditioning works to improve pupils' athletic development and sport therapists provide physiological support.

The Leys Sports Academy encourages excellence for our most able athletes, many of whom have gone on to play high-level representative sport. This is supported by links we have with clubs in the region, including a partnership with Northamptonshire Cricket, Sunrisers Cricket Academy, Saracens Mavericks Netball and Northampton Saints Rugby. Sports tours feature in the calendar, and pupils have trained and played in South Africa, Malaysia, Australia and Sri Lanka in recent years.



“

Pupils' achievements outside the classroom are extensive. This is supported by an extra-curricular provision that is a real strength of the school both in its range and scope, and its success is enjoyed by pupils of all ages.





Outdoor Education

During their time at the School, pupils have the opportunity to develop outdoor skills and participate in outdoor pursuits including walking expeditions, canoeing, climbing and sailing. These allow pupils to acquire greater independence and self-confidence, an awareness of individual strengths, weaknesses and potential, and the ability to lead and work as part of a team.

In the Summer Term of Year 9, pupils take part in an outdoor education residential where they receive preliminary instruction in expedition planning, camp craft and navigation, before completing their Bronze Duke of Edinburgh's (DofE) Award Assessed Expedition in Year 10.

Pupils complete the volunteering, skills and physical recreation sections through their extra-curricular activities, which can include out of school commitments. Year 12 pupils can progress to the Gold DofE Award irrespective of any previous participation.



“

Pupils demonstrate great awareness of the world around them, and a deep appreciation of the preciousness of the world's resources.

~ ISI Report 2022



Personal Development and Leadership

As part of the Wider Curriculum, pupils in Years 10, 11 and the Lower Sixth participate in our Personal Development, Service and Leadership Scheme. Over a three year period, the scheme develops pupils' self-confidence and leadership skills, whilst also supporting the local community. The Leys maintains strong partnerships with a number of local charitable organisations, hospitals, care homes, schools and environmental schemes, and pupils play an active role in a range of initiatives.

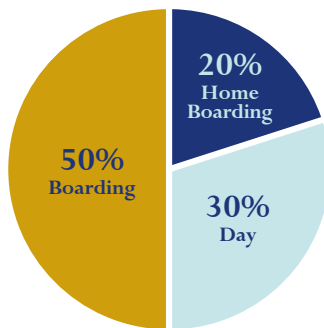
In Year 10, all pupils join the Combined Cadet Force (CCF) which comprises Army and Navy sections, each offering training in outdoor pursuits, leadership, practical and military skills.





Pastoral Care

The Leys has a unique feel. We pride ourselves on the fact that every member of School, from the oldest serving member of staff to the youngest pupil, has a role to play in our successful community. Teamwork, shared responsibility, mutual respect and pastoral care play their part, enabling every Leysian to develop at his or her own pace whilst nurturing those abilities which carry them forward in life.



Ratio of Boys to Girls

60:40

Care for the individual lies at the very heart of our support structure and we have in place a proven network to underpin the many and varied needs of Leysians as they progress through the School and into adulthood. This network includes medical care, a tutor system, learning support staff, the Chaplaincy and general pupil welfare overseen by our established team of Housemasters and Housemistresses.



Discover more:



Chapel

The Leys is a Methodist Foundation, founded in 1875 by a leading group of Wesleyan Methodists who wanted to build an independent school on a Christian non-sectarian basis. This aim remains at The Leys today, where a positive and enquiring attitude to religion is encouraged and links to the Leysian Mission in the City of London are maintained.

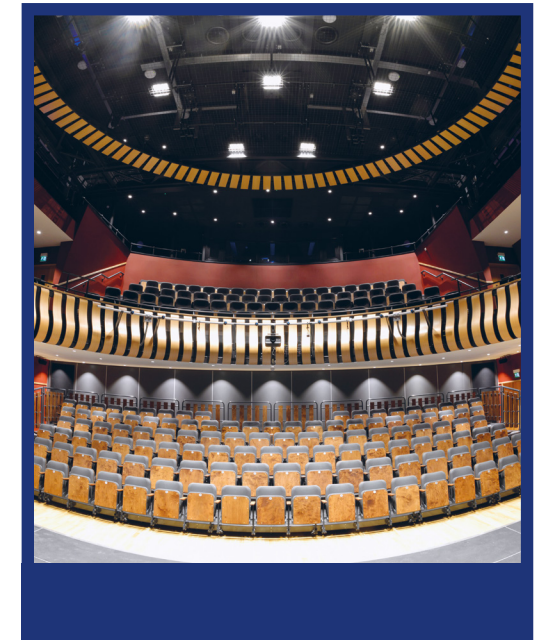
The School Chapel is very much the centre of school life. As a focus for formal worship, it underpins the sense of community and encourages tolerance of religious views. Pupils are invited to feel at home in the Chapel, to enjoy it for services or to use it as a quiet area for reflection in an otherwise busy environment.

The whole school has a weekly service for pupils and there are also school services held at regular intervals throughout the year, such as Harvest Festival and Remembrance Day, which are family occasions with parents welcome to attend.

The School Chaplain provides spiritual and ethical guidance and support, helping pupils with their everyday lives and discussing any issues which may arise. Preparation for Confirmation is available for those who want to make a formal commitment. The School Christian Union ('The Cake Society') meets weekly in term time for fun, interesting talks, Bible Study and fellowship.

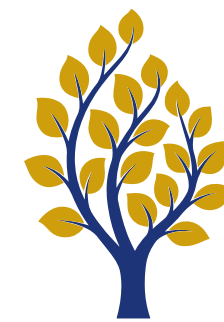


Discover more:



Great Hall

Great Hall is an invaluable addition to Leysian life. We have seen the level of drama and musical performances rise to new heights as the pupils relish performing in this superb and well-equipped space.



50

Acre Campus

The drama studio is used regularly as a more intimate performance space, while the dance studio has been welcomed as a bright space for physical self-expression.

Our three new ergonomic science labs have benefitted teaching and learning by making movement from the theoretical to the practical more seamless.

Balgarnie's, our café, is very popular with pupils and staff as a relaxing space in which to meet and socialise and last, but by no means least, the spacious location of Great Hall makes it possible for everyone at the School to meet for weekly Assemblies.

The Leys and Cambridge itself are very fortunate to have Great Hall, which is available to use in so many guises.



Discover more:



Admissions Information



Visit us

To arrange a visit to The Leys

or email our Admissions team at:
admissions@theleys.net

or call our Admissions team on:
01223 508 904

For further details about the admissions process, including entrance assessments, fees, scholarships and bursaries.

Entry at Year 7

One to two years ahead of joining The Leys applicants must complete the Application Form on our website

In the October prior to the year of entry we request reports from current schools

In early January entry tests take place at The Leys

In mid-January Academic Scholarship interviews take place for those who are invited

In early February offers are made

The first Monday in March is the deadline for acceptance of places

During the first week in March offers are then made for any late applicants

During May the New Joiners packs are sent out to those joining us in September

Move-up morning takes place on a Saturday in early June for those joining at Year 7

Term begins in September

Entry at Year 9

One to two years ahead of joining The Leys applicants must complete the Application Form on our website

In the October prior to the year of entry we request reports from current schools

In early January entry tests take place at The Leys

In mid-January Scholarship assessments take place

In early February offers are made

The first Monday in March is the deadline for acceptance of places

During the first week in March offers are then made for any late applicants

The last weekend of the summer term we offer a 24-hour visit for those who have accepted a place

In May New Joiners packs are sent out

Term begins in September

Entry at Year 12

One to two years ahead of joining The Leys applicants must complete the Application Form on our website

In the September prior to the year of entry we circulate the A Level Course Booklet

Sixth Form Open Evening is held on the last Thursday in September

During October, we request reports and predicted grades from current schools

All reports and academic information is collated and reviewed during the last week in October

Scholarship Interviews take place during the first week in November

In early December first round offers are sent out

The deadline for acceptance of places is the end of the second week of December

In the second week of January further offers are made to late applicants

In May New Joiners packs are sent out

Term begins in September

Scholarships

Through our Scholarships, we aim to encourage and reward the potential for excellence and leadership in the intellectual life of the school and in the wider curriculum. We welcome applications from those who display outstanding ability and a commitment to strive for the very highest standards.

Through our scholars' programmes, we support and nurture individuals to grow and develop in their particular field, giving them the confidence to achieve their full potential. We expect scholars to aspire to excellence in all aspects of life at The Leys, setting standards for others.

All our scholarships carry a value of 5%, but we are committed to

widening participation in the school through means-tested bursaries and so larger awards can be made based on financial need. Contact the Admissions team for further information on Scholarships and Bursaries.

Discover more:



