



THE **Leys**  
CAMBRIDGE



ACHIEVE THE  
EXCEPTIONAL  
*at The Leys*



# Welcome to *The Leys*

I have always believed that school is not merely a preparation for life, but life itself. For this reason, at The Leys we believe that our pupils' school lives should be full of challenges, choices and opportunities for growth and flourishing, for emotional and intellectual enrichment. School is not simply a rehearsal for what is yet to come.

The Leys, founded in 1875 by The Methodist Conference, is the only co-educational boarding and day school in Cambridge. It blends traditional values – kindness, courtesy, tolerance, respect and decency – with a forward-looking approach to education. We take full advantage of our location in the centre of one of the world's most intellectually and culturally stimulating cities to ensure that the curriculum is qualitatively different from what other schools are able to offer. Cambridge, in other words, is not just a descriptor of where we are, but of what we seek to do.

With around 570 pupils, we sometimes describe ourselves as a 'big, small school'. The Leys is big enough to offer a huge range of opportunities, but small enough that we are able to get to know individuals really well. One of my chief joys is that this allows me to play a prominent role in the pastoral care of all the boys and girls here. The result of our focus on individuals and pastoral care is confidence. The confidence which our pupils gain from this encouraging and supportive ethos is perhaps the greatest gift we can offer them – without it, they cannot hope to fulfil their potential in work and play.

I hope you enjoy what you read and see in this prospectus. If you do, then I would urge you to come and visit us, so that you can see the School in operation. You will, I am confident, discover for yourself that this really is a special place.

I look forward to meeting you and I can assure you of a warm welcome.



*M. Priestley*

**Martin Priestley**  
Headmaster





## A rich and vibrant city

## A home from home

The Leys is a small close-knit community based on mutual respect and shared values. Its backbone is the House system where pupils are allocated to one of eleven Houses (this includes three Day Houses). The Boarding House is a second home for our pupils, where support is available at all times from the resident Housemaster or Housemistress (Hsm as we call them), their Assistants (also resident) and the tutor team dedicated to each House. A friendly, caring Matron is always in the House up to mid-afternoon.

choice of three boys' Houses, two girls' Houses and one Sixth Form House each for boys and girls.

Parents are always very welcome to come to any of the school events taking place, whether it be on the sports field, in Chapel or in the Performing Arts Centre, Great Hall. Boarders can opt to go home after their Saturday commitments, or they can choose to stay in School where one of the highlights is the famous Leysian Sunday brunch!

At The Leys we offer Boarding for pupils from Year 7 with these younger children having their very own Boarding House (Moulton) across the road from the main campus. For the older pupils, there is a



**8 BOARDING HOUSES**  
**3 DAY HOUSES**



Life at The Leys



**LOCATED IN THE HEART OF CAMBRIDGE**

Cambridge is one of England's most historic and cultural cities and its university ranks amongst the best in the world. It is also a centre of innovation and development and has risen to be the UK's leading technology and biotechnology cluster.

This gives pupils at The Leys unparalleled opportunities to hear leading figures speak on matters from biotechnology to astronomy and cultural affairs.

The area around Cambridge is sometimes known as *Silicon Fen* which reflects that the region is a powerhouse of cutting edge high-tech companies and science parks. The pupils benefit from being in close proximity to such ground-breaking ideas and innovation.

Cambridge is only 50 minutes away from the capital and there are a number of excursions to London each year.



Discover more:



Discover more:





# Academic *Excellence*

Based upon the foundation stone of a happy campus environment, a strong work ethic is built from the outset. As pupils progress through the structured framework of their early years, they take on increased responsibility for planning their workloads with the full support of a co-ordinated tutorial system. Classes are small, enabling teachers to offer individual help to every pupil.

The school's academic results reflect the expertise, vitality and enthusiasm that our teachers inject into school life.

If you ask Leysians, they will testify to the warmth, energy and commitment of their teachers.

 **100%**  
A Level Pass Rate  
**100%**  
GCSE Pass Rate



“

**Pupils of all ages display excellent attitudes to learning. They show a genuine love of learning and an insatiable desire to soak up new knowledge at every opportunity.**

~ ISI Report 2022



*The Vision Studio*





# The Wider Curriculum

## Drama

The termly drama programme makes full use of the school's outstanding theatre and drama facilities in Great Hall. This provides opportunities for pupils across all year groups to try out many skills, from performance and set design to production and technical support. The School puts on at least five productions each year and there are regular opportunities for individuals or small groups to perform short extracts in Assembly. There is also a very active Drama Scholars' programme that aims to foster a passion for performance and to develop pupils' performance and design skills.



## Dance

Dance is another strength at The Leys and is very popular with pupils in all year groups. In our purpose-built dance studio we offer classes in Contemporary, Street, Modern Jazz, Classical Ballet, Hip Hop, Acrobatics and the popular Aerial Hoop. Other fitness classes are also available such as Yoga and Pilates. There is an annual Dance Show which is a big highlight of the year.



## Music

The Music School is a vibrant department at the heart of school life and there is provision for musicians at every level, both academically and practically. More than 200 instrumental lessons are taught each week, and tuition is available in most instruments. There are numerous performing opportunities, from informal breaktime and lunchtime concerts to larger scale formal events including the Concerto Competition and the End of Year Concert at Saffron Hall. Choir visits are arranged to cathedrals and colleges, and recordings and tours are also undertaken. There are a wide variety of ensembles including the Chapel Choir, Chamber Choir, Junior Voices, Orchestra, Wind Band, Big Band, String Orchestra and various smaller groups. The Music School's facilities are excellent and well resourced, including a 120-seat recital hall with Steinway grand piano and harpsichord, recording studio, ICT composition suite, percussion room, music library and numerous practice rooms. The school also has a C. Bechstein concert grand piano and a 3-manual Viscount organ.



End of Year Concert



## After School Activities

During the school week we offer an extensive range of clubs, societies and activities that our pupils can take advantage of. Most of these run in our After School Activities programme in the early evening. In addition, there are talks and lectures that occur, both on site and in Cambridge. Pupils, with guidance from house staff, have responsibility for choosing their wider curricular activities and signing up for them each term.



100+  
WEEKLY  
CLUBS AND  
ACTIVITIES





“

Pupils of all ages display excellent attitudes to learning. They show a genuine love of learning and an insatiable desire to soak up new knowledge at every opportunity.

~ ISI Report 2022







## Sport

Pupils have many opportunities to enjoy competitive and recreational sport. A team sports ethos, which develops leadership skills, social interaction and teamwork, is central to our approach and complements pupils' academic and non-academic activities.

Hockey, rugby and netball are the focus of the winter sports programme while cricket and tennis form the mainstay of the summer term. Rowing, swimming, strength and conditioning, water polo, badminton, squash and volleyball are also on offer, with sailing, basketball, football, climbing and dance featuring in the School's games and activities programme. Teams at all levels have the opportunity to compete in fixtures against other schools and in county, regional and national competitions. House matches encourage playing sport for fun and enjoyment.

Our outstanding facilities include two Astroturf hockey pitches, all-weather tennis courts, indoor swimming pool, climbing wall, rifle range and a dance studio, as well as a modern sports complex with conditioning suite, large hall, three squash courts and a two-lane cricket centre. The Leys also shares a boathouse on the River Cam with Churchill, King's and Selwyn Colleges, and rowing proves to be a popular option for many pupils. The School's Head of Strength and Conditioning works to improve pupils' athletic development and sport therapists provide psychological and physiological support.

The Leys Sports Academy encourages excellence for our most able athletes, many of whom have gone on to represent their Country. This is supported by links we have with clubs in the region, including a partnership with Northamptonshire Cricket, Sunrisers Cricket Academy, Saracens Mavericks Netball and Northampton Saints Rugby. Sports tours feature in the calendar, and pupils have trained and played in South Africa, Malaysia, Australia and Sri Lanka in recent years.



**“Pupils’ achievements outside the classroom are extensive. This is supported by an extra-curricular provision that is a real strength of the school both in its range and scope, and its success is enjoyed by pupils of all ages.**

~ ISI Report 2022





“

**Pupils demonstrate great awareness of the world around them, and a deep appreciation of the preciousness of the world's resources.**

~ ISI Report 2022

## Outdoor Education

During their time at the School, pupils have plenty of opportunity to develop outdoor skills and participate in outdoor pursuits including walking expeditions, canoeing, climbing and sailing. These allow pupils to acquire greater independence and self-confidence, an awareness of individual strengths, weaknesses and potential, and the ability to lead and work as part of a team.

In the Summer Term of Year 9, pupils take part in an outdoor education residential where they receive preliminary instruction in expedition planning, camp craft and navigation, before completing their Bronze Duke of Edinburgh's (DofE) Award Assessed Expedition. Activities attended regularly may also count towards the volunteering, physical and skills section of the Award.

Two further large-scale DofE expeditions are organised for pupils to meet the criteria for the expedition section of the Silver Award. Pupils complete the volunteering section by participating in Communities Services Groups. Pupils complete the volunteering, skills and physical recreation sections through their extra-curricular activities, which can include out of school commitments. Year 12 pupils can progress to the Gold DofE Award irrespective of any previous participation.



Discover more:



## Personal Development and Leadership

As part of the Wider Curriculum, pupils in Years 10, 11 and the Lower Sixth participate in our Personal Development, Service and Leadership Scheme. Over a three year period, the scheme develops pupils' self-confidence and leadership skills, whilst also supporting the local community. The Leys maintains strong partnerships with a number of local charitable organisations, hospitals, care homes, schools and environmental schemes, and pupils play an active role in a range of initiatives.

In Year 10, all pupils join the Combined Cadet Force (CCF) and have the option to continue with the Silver DofE Award. CCF comprises Army and Navy sections, each offering training in outdoor pursuits, leadership, practical and military skills.



Discover more:

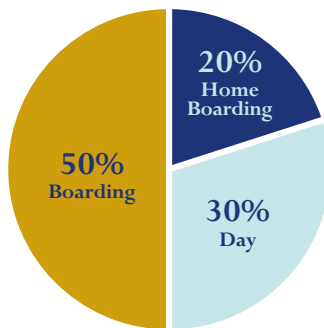






## Pastoral Care

The Leys has a unique feel. We pride ourselves on the fact that every member of School, from the oldest serving member of staff to the youngest pupil, has a role to play in our successful community. Teamwork, shared responsibility, mutual respect and pastoral care play their part, enabling every Leysian to develop at his or her own pace whilst nurturing those abilities which carry them forward in life.



Ratio of Boys to Girls

**60:40**

Care for the individual lies at the very heart of our support structure and we have in place a proven network to underpin the many and varied needs of Leysians as they progress through the School and into adulthood. This network includes medical care, a tutor system, learning support staff, the Chaplaincy and general pupil welfare overseen by our established team of Housemasters and Housemistresses.



Discover more:



## Chapel

The Leys is a Methodist Foundation, founded in 1875 by a leading group of Wesleyan Methodists who wanted to build an independent school on a Christian non-sectarian basis. This aim remains at The Leys today, where a positive and enquiring attitude to religion is encouraged and links to the Leysian Mission in the City of London are maintained.

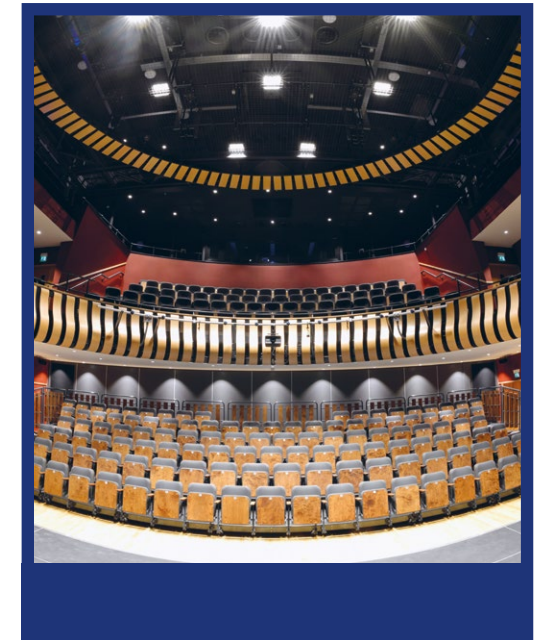
The School Chapel is very much the centre of school life. As a focus for formal worship, it underpins the sense of community and encourages tolerance of religious views. Pupils are invited to feel at home in the Chapel, to enjoy it for services or to use it as a quiet area for reflection in an otherwise busy environment.

The whole school has a weekly service which all pupils attend. There are school services held at regular intervals throughout the year, such as Harvest Festival and Remembrance Day, which are family occasions with parents welcome to attend.

The School Chaplain provides spiritual and ethical guidance and support, helping pupils with their everyday lives and discussing any issues which may arise. Preparation for Confirmation is available for those who want to make a formal commitment. The School Christian Union ('The Cake Society') meets weekly in term time for fun, interesting talks, Bible Study and fellowship.

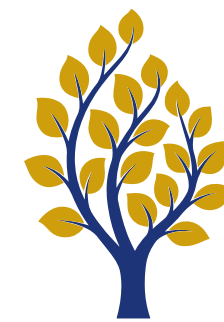


Discover more:



## Great Hall

Great Hall is an invaluable addition to Leysian life. We have seen the level of drama and musical performances rise to new heights as the pupils relish performing in this superb and well-equipped space.



**50**

Acre Campus

The drama studio is used regularly as a more intimate performance space, while the dance studio has been welcomed as a bright space for physical self-expression.

Our three new ergonomic science labs have benefitted teaching and learning by making movement from the theoretical to the practical more seamless.

Balgarnie's, our café, is very popular with pupils and staff as a relaxing space in which to meet and socialise and last, but by no means least, the spacious location of Great Hall makes it possible for everyone at the School to meet for weekly Assemblies.

The Leys and Cambridge itself are very fortunate to have Great Hall, which is available to use in so many guises.



Discover more:





# Admissions *Information*



*Visit us*



To arrange a visit to The Leys



or email our Admissions team at:  
**admissions@theleys.net**



or call our Admissions team on:  
**01223 508 900**



For further details about the admissions  
process, including entrance assessments,  
fees, scholarships and bursaries.



## Entry at Year 7

One to two years ahead of joining The Leys  
applicants must complete the Registration  
Form on our website and pay the £100 fee



In the October prior to the year of entry we  
seek permission to request reports from  
current schools



We then request the reports from current  
schools ahead of the January assessments



On the first Saturday in January entry tests  
take place at The Leys



In mid-January Academic Scholarship  
interviews take place for those who are invited



In early February offers are made



The first Monday in March is the deadline for  
acceptance of places



During the first week in March offers are then  
made for any late applicants



During May the New Joiners packs are sent  
out to those joining us in September



Move-up morning takes place on a Saturday in  
early June for those joining at Year 7



Term begins in September

## Entry at Year 9

One to two years ahead of joining The Leys  
applicants must complete the Registration Form on  
our website and pay the £100 fee



In the July prior to the year of entry we ask that  
candidates confirm their intention to sit entry tests  
and pay a £600 entry fee



In the October prior to the year of entry we seek  
permission to request reports from current schools



During November we request the reports from  
current schools ahead of the January assessments



On the first Saturday in January entry tests  
take place at The Leys



In mid-January Scholarship assessments take place



In early February offers are made



The first Monday in March is the deadline for  
acceptance of places



During the first week in March offers are then made  
for any late applicants



The last weekend of the summer term we offer a  
24-hour visit for those who have accepted a place



In May New Joiners packs are sent out



Term begins in September

## Entry at Year 12

One to two years ahead of joining The Leys  
applicants must complete the Registration Form  
on our website and pay the £100 fee



In the September prior to the year of entry we  
circulate the A Level Course Booklet



Sixth Form Choices Evening is held on the  
last Thursday in September



In the first week of October, we seek permission  
to request reports from current schools



All reports and academic information is collated  
and reviewed during the last week in October



Scholarship Interviews take place during the  
first week in November



On 1 December all first round offers are sent out



The deadline for acceptance of places is the  
end of the second week of December



In the second week of January further offers  
are made to late applicants



In May New Joiners packs are sent out



Term begins in September

## Scholarships

Through our Scholarships, we aim to encourage and reward the potential for excellence and leadership in the intellectual life of the school and in the wider curriculum. We welcome applications from those who display outstanding ability and a commitment to strive for the very highest standards.

Through our scholars' programmes, we support and nurture individuals to grow and develop in their particular field, giving them the confidence to achieve their full potential. We expect scholars to aspire to excellence in all aspects of life at The Leys, setting standards for others.

All our scholarships carry a value of 5%, but we are committed to

widening participation in the school through means-tested bursaries and so larger awards can be made based on financial need. Contact the Admissions team for further information on Scholarships and Bursaries.



Discover  
more:







The Fen Causeway, Cambridge CB2 7AD T: 01223 508 900 E: [admissions@theleys.net](mailto:admissions@theleys.net) W: [theleys.net](http://theleys.net)  
[instagram](#) | [facebook](#) | [twitter](#)